

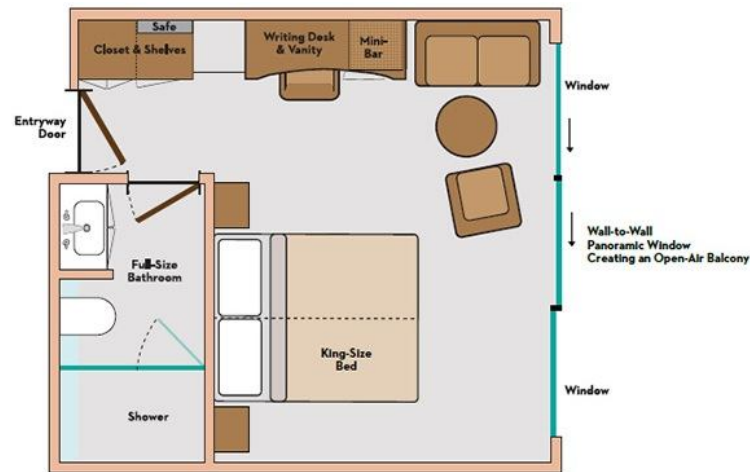
Dold World Journeys Presents

Irrawaddy River Cruise - Ship Details

Avalon Myanmar - Built in 2015 • 200 ft long • 18 Staterooms • up to 36 Guests • 24 Crew Members

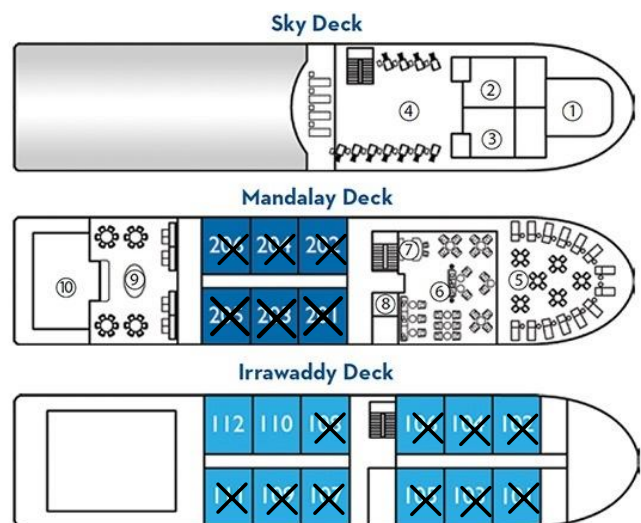
Room Features:

- Alarm clock
- Bedside tables with reading lamps
- Comfort Collection Beds
- Individual climate control
- In-house telephone
- Large private bathroom featuring full shower with glass door, hairdryer, and premium bath amenities
- Nightly turn-down service
- Soft & firm pillows
- Writing desk
- Bathrobes & slippers
- Choice of bed configuration (two twins or one king)
- Easy under-bed luggage storage
- Floor-to-ceiling sliding-glass door
- In-room safe
- Mini-bar with complimentary local beer, soft drinks & bottled water
- Spacious closets with shelves for ample storage
- Wall-to-Wall Panoramic window measuring 14-feet wide that opens to transform the living space into a large Open-Air Balcony



Ship Amenities:

- Open-air deck with shade & premium chairs
- Complimentary Wi-Fi access in the lounges.
- Spa treatment room
- Fitness Center and Library with games
- Audio headsets for all shore excursions
- Friendly, English-speaking crew
- Sightseeing with Certified Local Guides
- Cruise Director
- Onboard movie nights
- Spacious, open seating restaurant
- Air-conditioned Panorama Lounge
- Bar serving premium spirits & complimentary coffee, tea, soft drinks, and local beer/spirits throughout the day



Deck Plan

- | | |
|--|-------------------|
| 1 Navigation Bridge | 6 Panorama Lounge |
| 2 Spa treatment room | 7 Bar |
| 3 Gym | 8 Reception |
| 4 Premium lounge chairs | 9 Dining Room |
| 5 Open-air observation lounge with premium lounge chairs | 10 Galley |

Categories

- | |
|---|
| Cat. A Mandalay Deck |
| Cat. B Irrawaddy Deck |